

IMPORTANT! KEEP THIS MANUAL FOR FUTURE REFERENCE

**chipolino**

electra



This stroller **chipolino** has been manufactured in accordance with the Product Safety Directive 2001/95/EU of the European Parliament and The Council and with European standard EN 1888 "Child care articles. Wheeled child conveyances. Safety requirements and test methods" and EN 1466: 2014 "Child care articles. Carry cots and stands. Safety requirements and test methods" and the regulations of national law, including Consumer Protection Law.

## FOLLOW ALL WARNINGS, INSTRUCTIONS AND RECCOMENDATIONS IN THIS MANUAL IN ORDER TO GUARANTEE THE SAFE USE OF THIS PRODUCT:

### CAUTION! WARNINGS!

- NEVER LEAVE YOUR CHILD UNATTENDED!
- THE CARRY COT IS SUITABLE ONLY FOR A CHILD, WHO CANNOT SIT UNAIDED, ROLL OVER AND CANNOT PUSH ITSELF ON ITS HANDS AND KNEES!
- USE THE CARRY COT ONLY ON FLAT, HORIZONTAL AND DRY SURFACE!
- NEVER USE CARRY COT ON A STAND!
- USE THE SITTING POSITION OF SEAT AFTER THE CHILD IS OLDER THAN 6 MONTHS!
- KEEP AWAY FROM FIRE!
- DO NOT LIFT THE STROLLER BY THE FRONT BAR, BECAUSE THIS CAN LEAD TO SERIOUS INJURIES!
- ALWAYS USE SAFETY BELTS!
- MAKE SURE THAT ALL LOCKING MECHANISMS ARE ENGAGED BEFORE PLACING THE CHILD IN THE STROLLER.
- MAKE SURE YOUR CHILD IS AT SAFE DISTANCE AWAY FROM THE STROLLER DURING ADJUSTMENTS, FOLD OR UNFOLD OF THE STROLLER.
- DO NOT ALLOW YOUR CHILD TO USE STROLLER AS A TOY!
- ALWAYS CHECK IF THE ATTACHMENT DEVICES OF SEAT UNIT, CARRY COT OR CAR SEAT ARE PROPERLY FIXED TO THE STROLLER'S FRAME BEFORE USAGE.
- THE STROLLER IS NOT SUITABLE FOR RUNNING OR SKATING!
- Use the stroller for a child weighing not more than 15 kg.
- Use the carry cot for a child weighting up to 9 kg.
- Initial assembly, folding and unfolding to be done only by adult!
- Do not put in carry cot additional mattress!
- Do not put in seat additional mattress!
- Always activate the parking device when the stroller has stopped and is not moving, especially when you place or take out your child from it!
- Make sure the safety belts are fastened and fit well to the child before usage.
- The maximum load for storage basket is 2 kg.
- Do not overload the stroller! Always balance your stroller in a way to keep it stable and prevent the risk of tip-over!
- Stroller and carry cot are intended for use for one child at a time!
- Do not use any spare parts or other components, which are not approved by the producer! The producer does not take any responsibility for the safety of the child when you have not used the proper and original spare parts, approved and provided by him!
- Do not apply any changes or modifications to the stroller's construction! Contact the dealer or an authorized repair service for advice and/or repair instead!
- Car seat does not replace a carrycot or a bed. Should your child need to sleep, then he should be placed in a suitable cot or bed.
- Discontinue the usage, if you find worn out or loose joints, damaged or missing parts! There is a risk of injury of the child!
- Do not allow children younger than 3 years near the stroller during the assembly or disassembly, in order to prevent the risk of injury or swallowing of small parts!
- Strings can cause strangulation! Do not place additional strings to the product to avoid injuries!
- Never use the stroller on stairs or escalators! Use extra care when going up or down a pavement or step!
- The packaging of the product must be kept out of the reach of children to avoid the risk of strangulation!



## WARNINGS AND GUIDELINES FOR BATTERY USE

Stroller „ELECTRA“ contains lithium-polymer battery. Use only battery type **IBL-18-2P** or approved by the producer equal type.

- **NEVER** use batteries that are not chargeable. Not following these instructions and using batteries which are not approved may cause permanent damage to the battery and physical injury.
- Follow the designated polarity in the battery compartment.
- **NEVER** use charging which is different from the prescribed in order to charge your stroller „ELECTRA“.
- **NEVER** use device for slow charging and do not allow discharge under 2,5V per cell.
- **NEVER** allow metal object near the battery contact surfacesd.
- **NEVER** allow the battery temperature to reach more than 60°C.
- **NEVER** dismantle or modify the cables in any way.
- **NEVER** place battery on top of flammable materials and do not leave battery unattended during charging.
- Do not store in wet place or near fire!
- Do not wet the battery!
- **ALWAYS** keep the battery out of reach of children.
- Remove the damaged or depleted battery.
- Take out and change the battery in case the product has been stored for longer period without using it or if the battery does not function properly.

**CAUTION!** Waste from depleted or unusable batteries must be disposed of separately. It is forbidden to throw them out in containers for household waste. Dispose of the batteries only at the specified places.

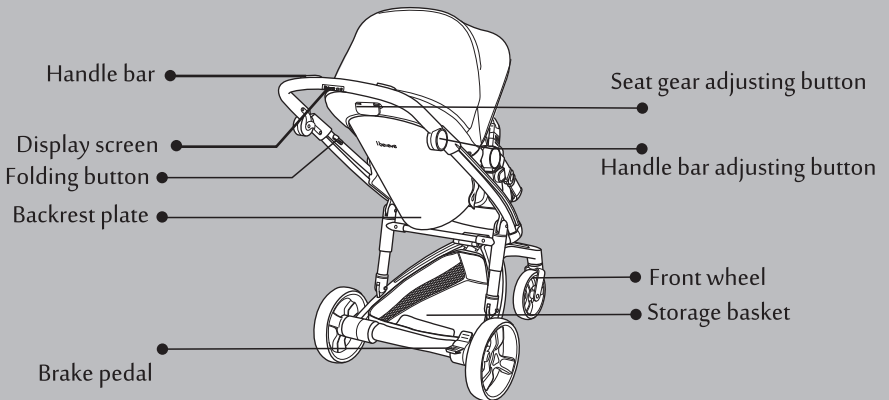
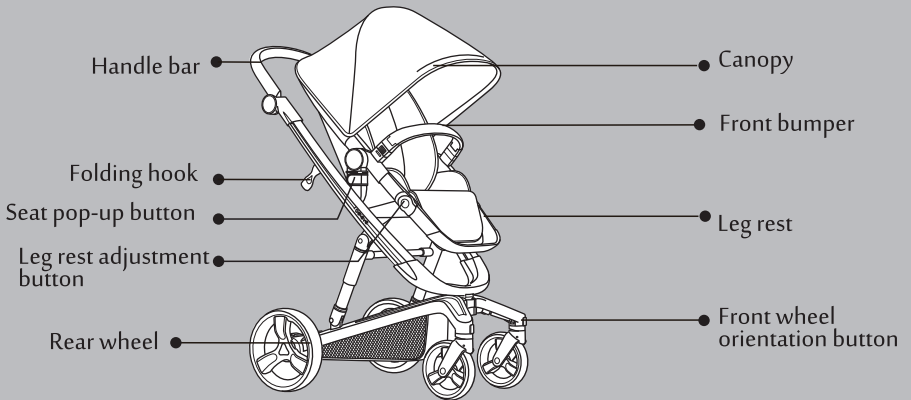


## MAIN FEATURES

- Seat unit is suitable for one child aged 0-36 months, weighing not more than 15 kg;
- Carry cot is suitable for one child aged less than 6 months and weighting not more than 9 kg. It can be used separately or attached to stroller's frame.
- Car seat "Electra", Group 0+ (0-13 kg). It is safe and compatible with Electra stroller's frame.
- Automated brake safety system
- Front light
- 5-point safety harness system;
- Seat unit can be installed in 2 directions – forward facing and rearward facing;
- Adjustable handle;
- Adjustable canopy;
- Adjustable leg rest.
- Lithium-polymer battery: model **IBL-18-2P**; voltage - 3,7 V, capacity - 4000mAh, charging voltage- 4,2V

**ATTENTION!** THIS SET DOES NOT CONTAIN CHARGER. YOU CAN USE ANY CHARGING DEVICE WHICH HAS A USB IN !TO CHARGE YOUR BATTERY

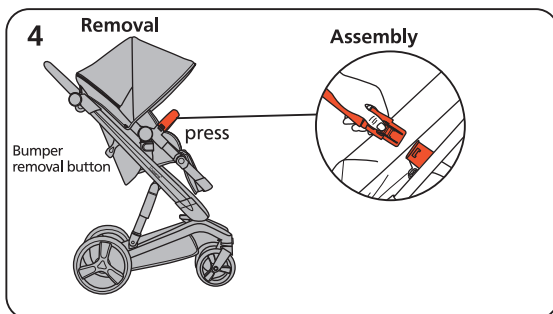
## MAIN PARTS



Set also includes (not shown in diagram):

- Li-polymer battery model IBL-18-2P – 1pc (Voltage- 3,7 V, Capacity - 4000mAh, charging voltage 4,2V)
- USB charging cable – 1 pc
- Light with USB cable set – 1 pc

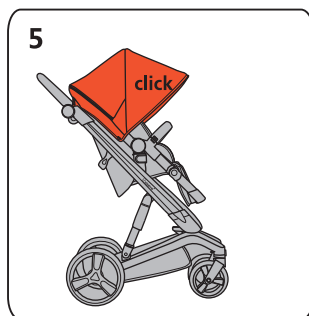
#### 4 – ASSEMBLY OF FRONT BUMPER



#### 5 - CANOPY ASSEMBLY

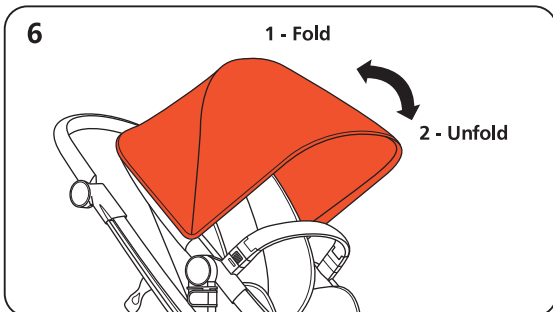
**CAUTION!** Always attach the canopy at the back of the seat in order to prevent the child from sliding off and injury.

To remove the canopy, press the canopy plastic ends and pull it out from the grooves.



#### 6 – CANOPY ADJUSTMENT

**Note:** Pull or push the canopy with your hand in order to set it in desired position.



## ASSEMBLY INSTRUCTIONS

This stroller is supplied partially assembled. In order to complete the assembly, you don't need any tools.

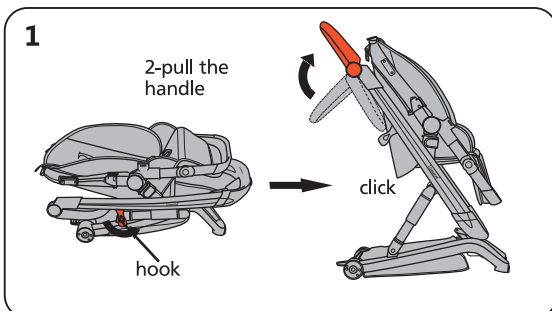
**IMPORTANT!** Follow exactly the instructions given and check the pictures. Keep your hands from entrapment!

**IMPORTANT!** After each operation, make sure that you have followed the instructions correctly and the fixing is stable!

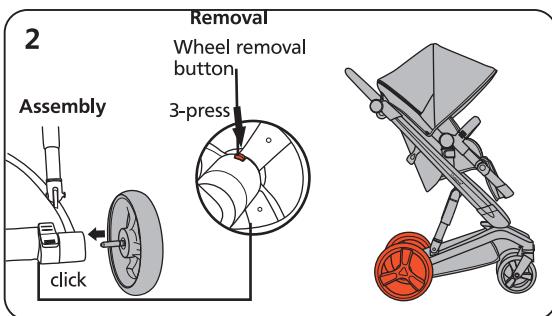
**IMPORTANT!** In most cases after the completion of an operation you will hear a clicking sound.

The assembly, disassembly and functions are numbered from 1 to 20. Use the operations descriptions given in this manual and their matching picture

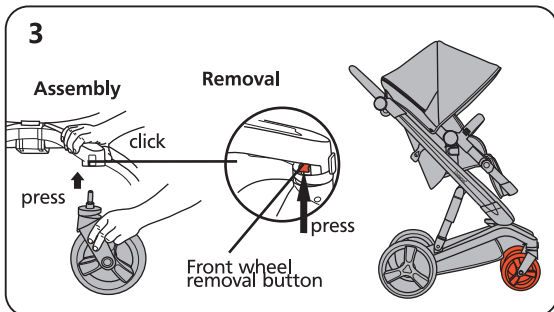
### 1 – STROLLER UNFOLDING



### 2 – ASSEMBLY / REMOVAL OF REAR WHEELS

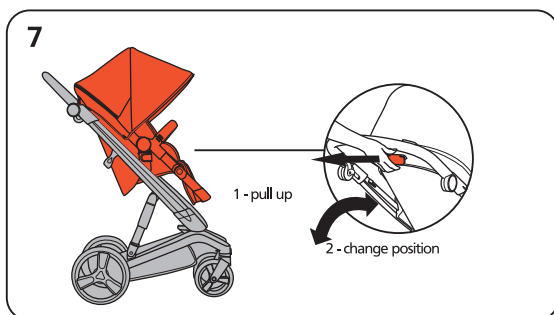


### 3 – ASSEMBLY OF FRONT WHEELS

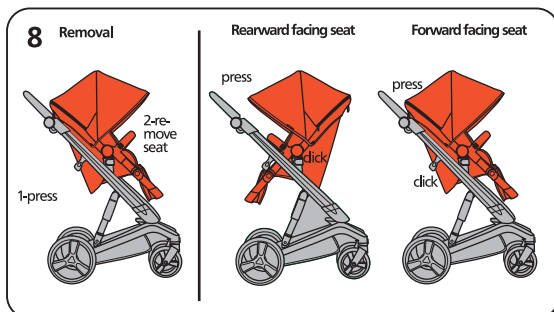


## 7 – BACKREST RECLINE POSITION ADJUSTMENT

**Note:** When backrest is fixed in certain position you will hear a “click”.



## 8 – SEAT REMOVAL CHANGE OF SEAT DIRECTION



## 9 – RESTRAINT SYSTEM (SAFETY HARNESS)

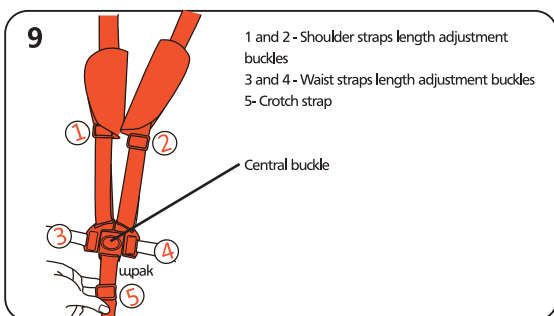
In order to unfasten the harness, press the central buckle.

**CAUTION!** USE THE HARNESS AT ALL TIMES IN ORDER TO AVOID THE RISK OF FALLING OR SLIDING OFF OF THE CHILD FROM THE STROLLER! **Use the harness for newborn baby as well as for baby who can sit unaided or push up on his knees and hands!**

**CAUTION!** Belts must be snug to child's body and must not be twisted.

**CAUTION!** Periodically check to ensure that the seat belt is securely attached to the stroller frame as well as securely fastened!

**CAUTION!** The seat belt straps must not be damaged, worn out or twisted.



## 10 – LEG REST ADJUSTMENT

a – change of leg rest position using the side buttons  
b – change of leg rest position from lower to higher position using your hand only

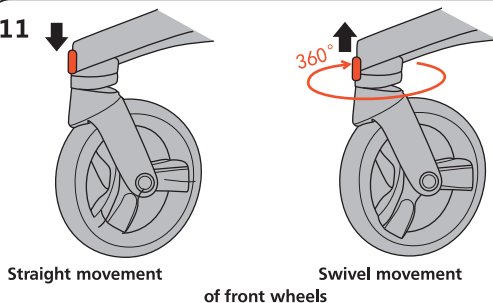
10



## 11 – SWIVEL AND STRAIGHT MOVEMENT OF FRONT WHEELS

*Note:* When you use the stroller on uneven surfaces, it is recommended to fix the wheels for straight motion.

11

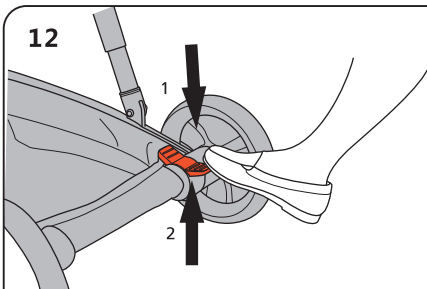


## 12 - PARKING DEVICE

12-1 - Rear wheels movement blockage.

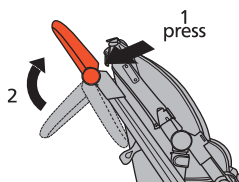
12-2 - Release of the rear wheels' movement.

12



## 13 - HANDLEBAR ADJUSTMENT

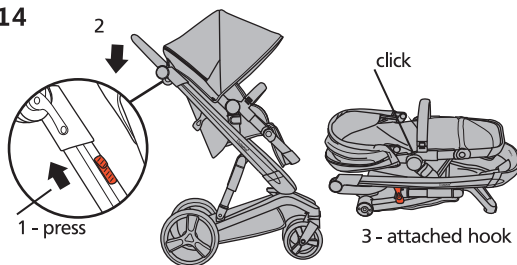
13



## 14 – STROLLER FOLDING

**IMPORTANT!** Before folding the stroller you must activate the parking device, close the canopy, fix the wheels and empty the storage basket.

14



## 15 - AUTOMATIC BRAKE SAFETY SYSTEM

### 15.1-Display indicators of the automatic safety brake system

#### 15.2 - Automatic brake safety operation system

##### a) Activating the system

Unzip the battery compartment pocket and turn on the power (place the switch in „ON“ position);

##### b) Display indicators

While driving the stroller, grab (press) one or two of the driving buttons located on the handlebar.

The driving indicator light will be on, and the stopping indicator will be off ;

##### c) Automatic stop of stroller movement

### 15

Display indicators of the automatic safety brake system



electro Driving indicator



Stopping indicator



Battery indicator

When you release the driving buttons, the driving indicator light will turn off. If the stroller is moving while you release the driving buttons, the automatic brake system will be activated and the stroller will stop moving - the stopping indicator light will turn on.

**ATTENTION! IF THE STROLLER IS NOT MOVING AFTER THE BRAKE IS RELEASED, PUSH IT FORWARD AND BACKWARDS IN ORDER TO GET IT IN MOTION AGAIN!**

#### 15.3 – De-activating the automatic brake safety system

Method 1 – Press the driving buttons for 3 seconds and simultaneously press the parking device pedal. Unzip the battery compartment pocket and turn off the power (place the switch in „OFF“ position). Release the pedal. If the stroller is moving freely, it is in mechanical stop mode. If the stroller does not move, you can use method 2.

Method 2– Press the parking device brake pedal. Unzip the battery compartment pocket and turn off the power (place the switch in „OFF“ position), then place the switch in “ON” position for 3 seconds and then again in „OFF“ position. Release the brake pedal. The stroller is in mechanical mode.

Method 3 - If your battery charge is low or in case of other problem connected with the automatic brake, you can release the system mechanically. To do this, you must move the pin for manual stop from main position to the end of the L-shaped groove, as shown in the figure (15.3- Method 3).

If you wish to switch again to automatic mode, you must move back the pin to main position.

*Note:* You must move the pins on bottom side of both rear wheels.

### 15-1



Switch On/off

Battery compartment

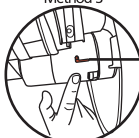


Movement buttons

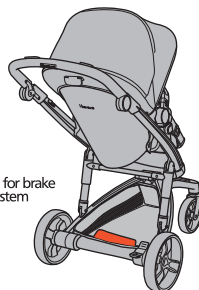
### 15-2 Method 1 and 2



Method 3



Switch for brake system



Mechanical brake system

Main position (Automatic brake system)

## 16 - BATTERY CHARGING

**ATTENTION!** When using for the first time, battery must be charged at least 6 hours.

Battery needs to be charged when the battery indicator starts to flash.

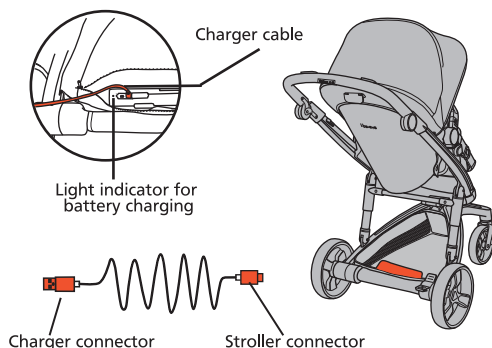
Unzip the battery pocket.

Connect the USB cable's connectors to the battery and to the charger.

During charging process, the battery indicator will light in red color.

When the battery is fully charged the indicator will be green.

16

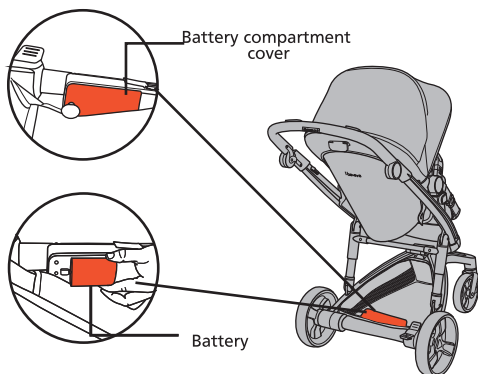


## 17 - REMOVAL AND REPLACEMENT OF THE BATTERY WITH NEW ONE

**IMPORTANT!** Use only the Li-polymer battery in this set model IBL-18-2P (Voltage - 3,7 V, Capacity - 4000mAh/14,8Wh, charging voltage 4,2V) or other recommended by the producer!

Unzip the battery compartment pocket. Unfasten the screw with screwdriver and open the battery compartment cover. Take out the battery. Split the cables and remove the battery. Join the cables of the new battery following the polarity and place it in the compartment. Tighten the screw and zip the pocket.

17



## 18 – LIGHT INSTALLATION

Place the light on front side of frame using the straps to tighten it.

To turn on the light, join the USB cable with the battery.

18



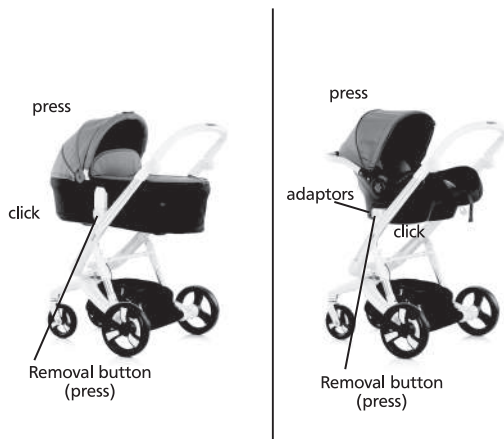
## 19 – INSTALLING CARRY COT AND CAR SEAT ON THE STROLLER FRAME.

*Note:* For your convenience, before installation of carry cot or car seat on the frame, activate the parking device.

*Note:* You can install Electra car seat on the frame of this stroller using adaptors. First install the adaptors on the car seat and then install the car seat on the stroller frame.

**ATTENTION!** Carry cot and car seat must always be installed on stroller's frame in a face to face mode – rearward facing the movement direction!

19



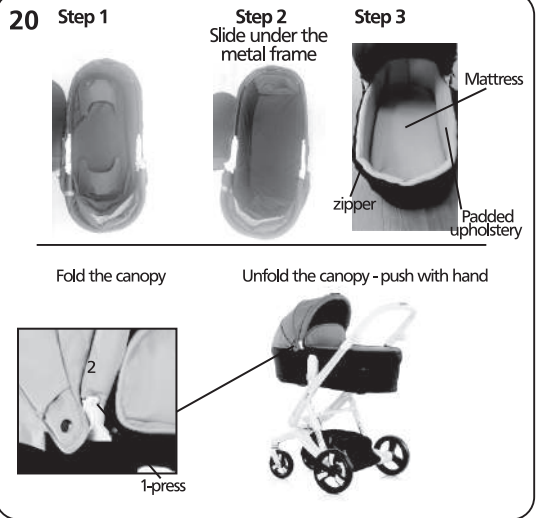
## 20- CARRY COT

**IMPORTANT!** The child's head in the carry cot must be positioned higher than the level of his body!

Step 1: Lift the two supports (1 and 2).

Step 2: Slide under the metal frame (3 and 4).

Step 3: Adjust the padded upholstery and close the zippers. Put the mattress.



## CARE AND MAINTENANCE GUIDELINES

- The brakes and wheels wear out faster than other parts. Replace them when necessary.
- Regularly oil the moving parts. Use silicone oil or silicone spray for oiling.
- Dirt could make difficult the function of your stroller. Clean and oil all dirty metal and plastic parts regularly.
- Clean the fabrics, plastic parts and metal parts with damp cotton cloth or sponge and mild soap.
- Do not use abrasive, bleach or other aggressive detergents.
- Always after cleaning leave the stroller and carry cot fully dry and after that use it or store it. It may appear mold to your stroller or carry cot if you keep them moist.
- Always store your stroller and carry cot indoors. The effect of the environment – sea air, road covered with salt, acid rains, etc., as well as storing in the open air lead to corrosion!

KKEL01xxxxx

KKELC01xxxxx







Bulgaria, Plovdiv, Str. Golyamokonarsko shosse №1  
[www.chipolino.com](http://www.chipolino.com)